

Guide to Lodging Sea Cargo Outturns via the ICS Diagnostic facility – A Quick Guide

The following Handy Hints guide is aimed at providing Sea Freight Depot Operators with a user friendly guide to lodging Outturn reports via the Customs Interactive from the Est / Depot List screen available from the Diagnostic functionality in the ICS.

This functionality will assist Depot Operators in identifying cargo reports they have not out turned, lodging those reports and compliment those who have edi software. Industry users can only view and amend outturns that they have created.

Depot Search List Screen

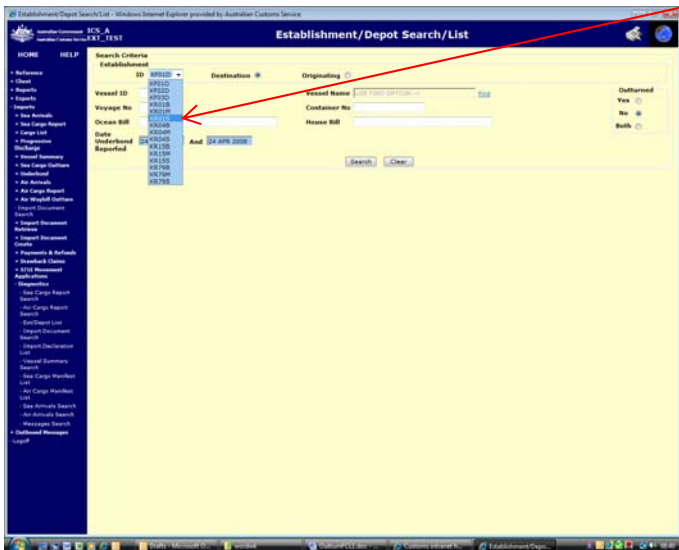
Field	Purpose
Search Criteria Establishment Id	Used to select the establishment where you believe the cargo has been moved to or moved from via an approved underbond. These establishments are licensed, fully automated premises authorised to receive, store, move and deliver import cargo. All establishments have a unique five digit code.
Destination Est	The licensed establishment where the cargo has been moved underbond to. This is the establishment that should have taken possession of the cargo at some stage.
Originating Est	The licensed establishment where the cargo has been moved from. This is the establishment that has released cargo on a further underbond movement.
Outturned "Yes"	Search for cargo that is Outturned "Yes" parameters are vessel / voyage or container number or bill number
Outturned "No"	Search for cargo that is Outturned "No" by either date or vessel / voyage or container number or bill number
Outturned "Both"	Searching for cargo that is Outturned "Both" parameters are vessel / voyage or container number or bill number

The displayed search results are derived from the cargo reports that have been linked to an approved underbond move to or from the establishment being searched on.

Derived Field	Action/input required
Vessel Id	Displays the Vessel Id of the vessel derived
Voyage Number	Displays the Voyage number of the vessel derived
Container Number	Displays the container number(s)
Ocean Bill	Ocean Bill number of consignment or container
House Bill	House Bill number of consignment
No Pkgs	Number of packages derived from the cargo report for the Ocean or House Bill
O/T	Indicates whether an Outturn has been lodged. In the advent of " <u>N</u> ", by clicking on the hyperlink defaults to an Outturn screen that can be populated
C/G TYP	Displays the cargo type i.e. FCL = Full container load, LCL = Less than container load, B/B = Break Bulk
C/R Status	Displays the cargo status for the line selected
U/B State	Displays whether the underbond is "chained", "approved" or "acquitted".

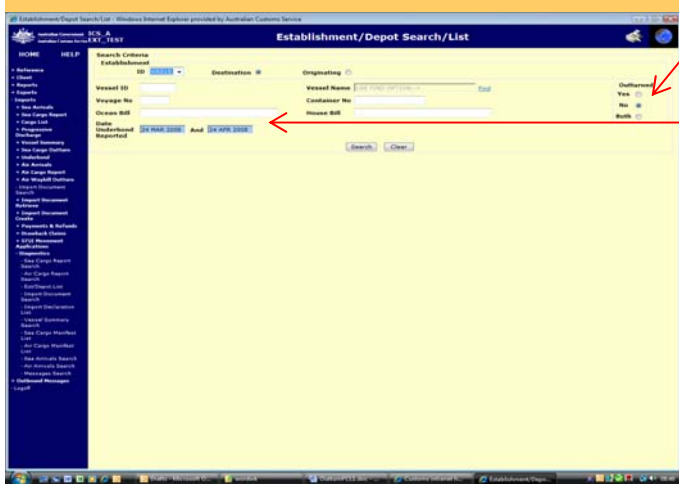
Guide to Lodging Sea Cargo Outturns via the ICS Diagnostic facility – A Quick Guide

Fig 4 - Establishment/Depot Search List



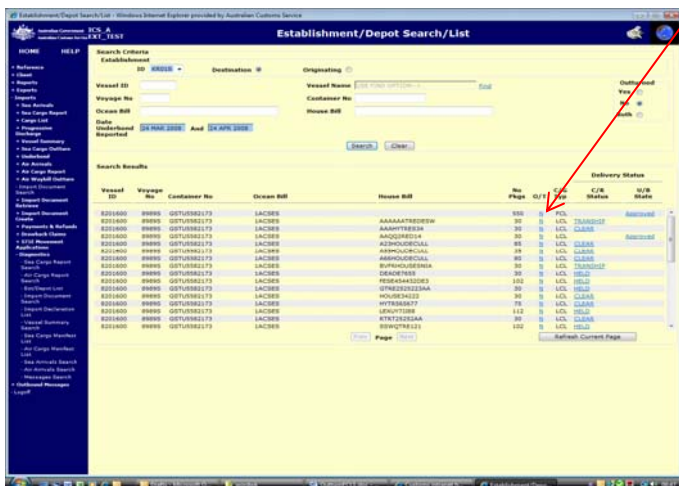
- Select the Est/Depot List from the expanded Diagnostic menu
- If a client has multiple establishments, they can select the establishment they require

Fig 5 - Filter search by outturn 'NO' and date range



- Client wishes to identify cargo they have not out turned
- Select the Out turned "No" button and search by selected date range (maximum of 30 days)

Fig 6 - Display Search Results



- Screen displays details of cargo that has not been out turned
- Scenario is that two FAK containers, GSTU5582173 and KLMU2288568 are moved underbond to the Depot and both will be unpacked and outturns submitted
- Cargo Report information is derived from the approved underbond and displayed; including vessels, voyage, container, bill(s), package and status details
- Select the 'N' Outturn hyperlink for the line of cargo to be out turned

Guide to Lodging Sea Cargo Outturns via the ICS Diagnostic facility – A Quick Guide

Fig 7 - Outturn Line Create screen

- ☞ Sea Cargo Outturn line automatically defaults to line selected
- ☞ For a Receipt Outturn of the container GSTU5582173 populate date and time arrived into premise
- ☞ Select Underbond indicator “U”
- ☞ Select Receipt indicator “R”
- ☞ Select Cargo type of FCL
- ☞ Delete derived Ocean Bill / not necessary for container ‘receipt’
- ☞ Populate Number of Packages, Package Type, Damage and Pillage Indicators
- ☞ Populate Seal Intact Indicator
- ☞ Populate Goods Description
- ☞ Click on “OK” Button

Fig 8 - Sea Cargo Outturn Create screen

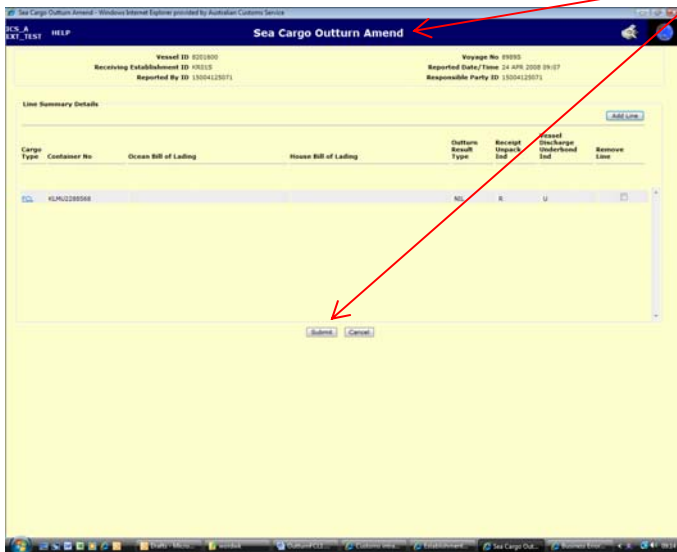
- ☞ Click on “Submit” Button
- ☞ Outturn has been submitted for receipt of container

Fig 9 - Sea Outturn View screen

- ☞ Sea Outturn View screen displays receipt Outturn for container GSTU5582173

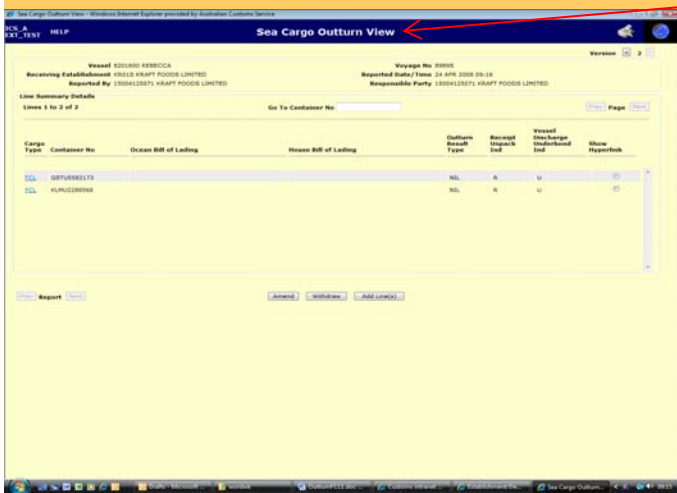
Guide to Lodging Sea Cargo Outturns via the ICS Diagnostic facility – A Quick Guide

Fig 13 – Sea Cargo Outturn Amend screen



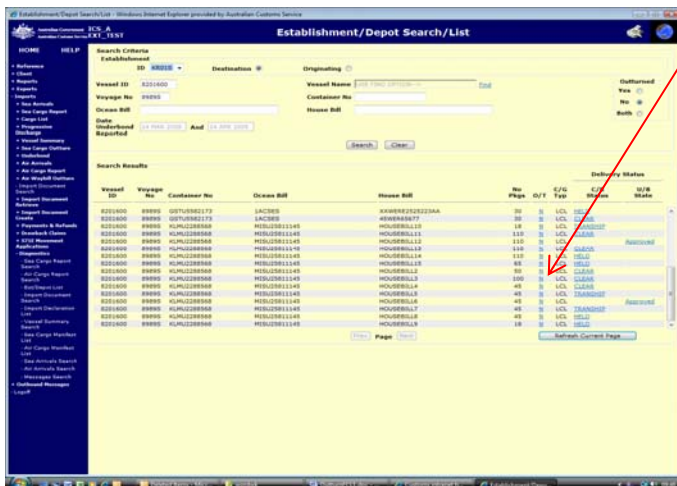
- Sea Cargo Outturn Amend screen appears as Outturn already exists for key identifiers of EST ID, Vessel and Voyage
- Click on “Submit” Button
- Outturn has been submitted

Fig 14 - Sea Cargo Outturn View screen



- Sea Cargo Outturn View screen displays Receipt Outturn for containers GSTU558217 and KLMU2288568

Fig 15 - Filter search by Outturn “No”



- Now we will outturn the LCL House Bills
- The first House Bill was received with nil discrepancy
- Return to Establishment / Depot Search / List screen
- Select House Bill 2
- Click on “N” hyperlink

Guide to Lodging Sea Cargo Outturns via the ICS Diagnostic facility – A Quick Guide

Fig 16 - Sea Outturn Line Create screen

- ☞ Sea Cargo Outturn line automatically defaults to line selected
- ☞ For an Unpack Outturn populate date and time container arrived into premise
- ☞ Select underbond indicator "U"
- ☞ Select Receipt / Unpack indicator "U"
- ☞ Outturn defaults to "Cargo Unpack Completion"
- ☞ Populate date and time line was unpacked
- ☞ Select Cargo type of LCL
- ☞ Select Outturn Result
- ☞ Populate Number of Packages, Package Type, Damage and Pillage Indicators
- ☞ Populate Goods Description
- ☞ Click on "OK" Button
- ☞ Sea Cargo Outturn amend screen appears
- ☞ Click on "Submit" Button

Fig 17 - Sea Cargo Outturn Amend screen

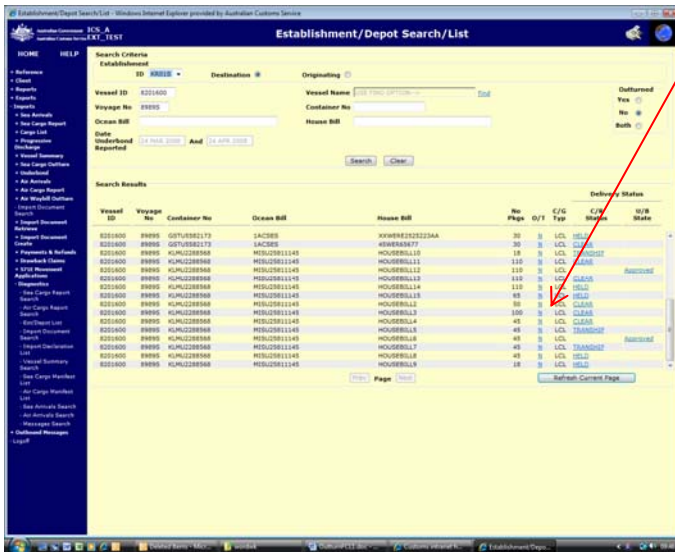
- ☞ Sea Cargo Outturn amend screen appears
- ☞ Click on "Submit" Button

Fig 18 - Sea Cargo Outturn View screen

- ☞ Sea Cargo View screen displays Unpack Outturn for HouseBill2

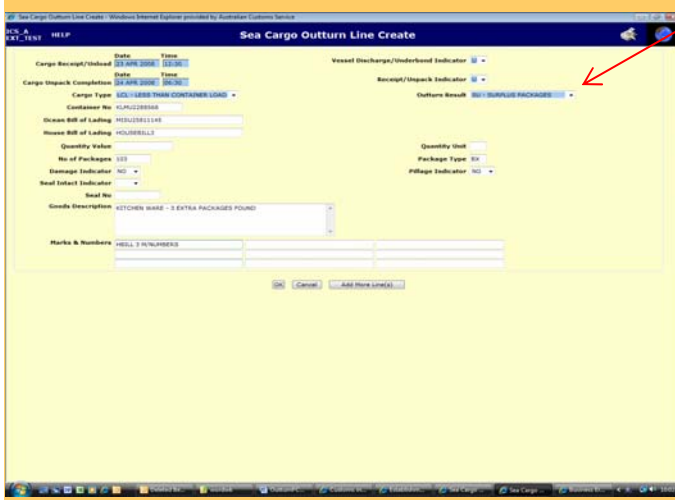
Guide to Lodging Sea Cargo Outturns via the ICS Diagnostic facility – A Quick Guide

Fig 19 - Filter Search by Outturn "No"



- Return to Establishment / Depot Search / List screen
- Select a House Bill that has not been out turned (HouseBill3)
- This House Bill was outturned with surplus packages
- Click on "N" hyperlink

Fig 20 - Sea Outturn create for Surplus pieces



- Sea Cargo Outturn line automatically defaults to line selected
- For an Unpack Outturn populate date and time container arrived into premise
- Select underbond indicator "U"
- Select Receipt / Unpack indicator "U"
- Outturn defaults to "Cargo Unpack Completion"
- Populate date and time line was unpacked
- Select Cargo type of LCL
- Select Outturn Result (SU) – Surplus Pieces
- Populate Number of Packages, Package Type, Damage and Pillage Indicators
- Populate Goods Description
- In the case of surplus goods the Marks and Numbers field must be populated
- Click on "OK" Button

Fig 21 - Sea Cargo Outturn Amend (add lines)



- Sea Cargo Outturn amend screen appears
- Client wishes to submit an additional Outturn (or line) on the same report
- A surplus consignment has been located that has not been reported
- Click on ADD button

Guide to Lodging Sea Cargo Outturns via the ICS Diagnostic facility – A Quick Guide

Fig 22 - Sea Cargo Outturn Line create screen

- ☞ Sea Cargo Outturn line automatically defaults to previous line selected
- ☞ For an Unpack Outturn populate date and time container arrived into premise
- ☞ Select underbond indicator “U”
- ☞ Select Receipt / Unpack indicator “U”
- ☞ Outturn defaults to “Cargo Unpack Completion”
- ☞ Populate date and time line was unpacked
- ☞ Replace derived House Bill with “Unknown Bill” or “Not Reported”
- ☞ Select Cargo type of LCL
- ☞ Select Outturn Result (SC)
- ☞ Populate other fields as previously done
- ☞ In the case of surplus goods the Marks and Numbers field must be populated
- ☞ Click on “OK” Button

Fig 23 - Sea Cargo Outturn view screen

Cargo Type	Container No	Ocean Bill of Lading	House Bill of Lading	Outturn Result Type	Receipt/Unpack Ind	Vessel Discharge/Underbond Ind	Remove Line
LCL	HLNU228988	HLNU2281145	HOUSEBILL4	SC	U	U	[X]
LCL	HLNU228988	HLNU2281145	UNKNOWN BILL	SC	U	U	[X]

- ☞ Sea Cargo Outturn amend screen appears
- ☞ Click on “Submit” Button

Fig 24 - Sea Cargo Outturn view screen

Cargo Type	Container No	Ocean Bill of Lading	House Bill of Lading	Outturn Result Type	Receipt/Unpack Ind	Vessel Discharge/Underbond Ind	Show Hyperlink
LCL	HLNU228988	HLNU2281145	HOUSEBILL4	SC	U	U	[X]
LCL	HLNU228988	HLNU2281145	UNKNOWN BILL	SC	U	U	[X]

- ☞ Sea Cargo View Screen displays Unpack Outturn for surplus “Unknown Bill”
-
- ☞ Client wishes to lodge another unpack for HouseBill4 which is outturned as ‘short’
- ☞ Click on “Add Line(s)” Button

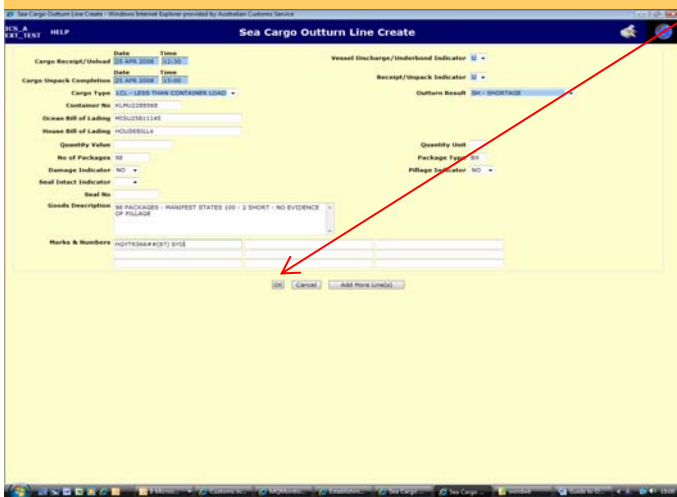
Guide to Lodging Sea Cargo Outturns via the ICS Diagnostic facility – A Quick Guide

Fig 25 - Sea Cargo Outturn amend screen



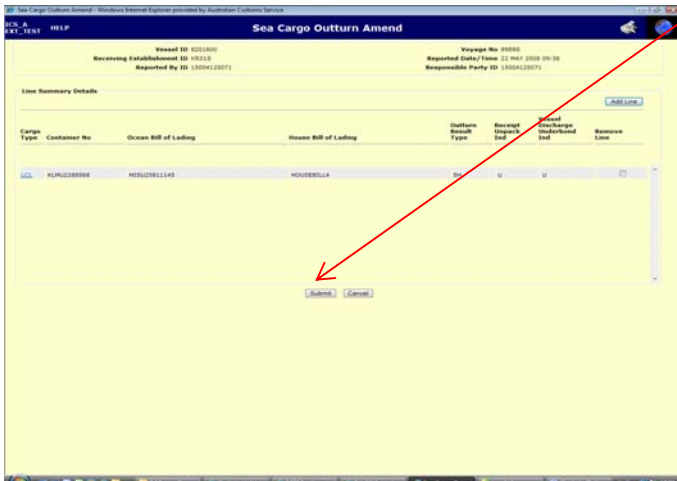
- ☞ Sea Cargo Outturn amend screen appears
- ☞ Click on “Add Line”

Fig 26 - Sea Outturn create for Short pieces



- ☞ Sea Cargo Outturn line automatically defaults to previous line selected
- ☞ For an Unpack Outturn populate date and time container arrived into premise
- ☞ Select underbond indicator “U”
- ☞ Select Receipt / Unpack indicator “U”
- ☞ Outturn defaults to “Cargo Unpack Completion”
- ☞ Populate date and time line was unpacked
- ☞ Replace derived House Bill with “House Bill”
- ☞ Select Cargo type of LCL
- ☞ Select Outturn Result (SH)
- ☞ Populate other fields as previously done
- ☞ In the case of short landed goods the Marks and Numbers field must be populated
- ☞ Click on “OK” Button

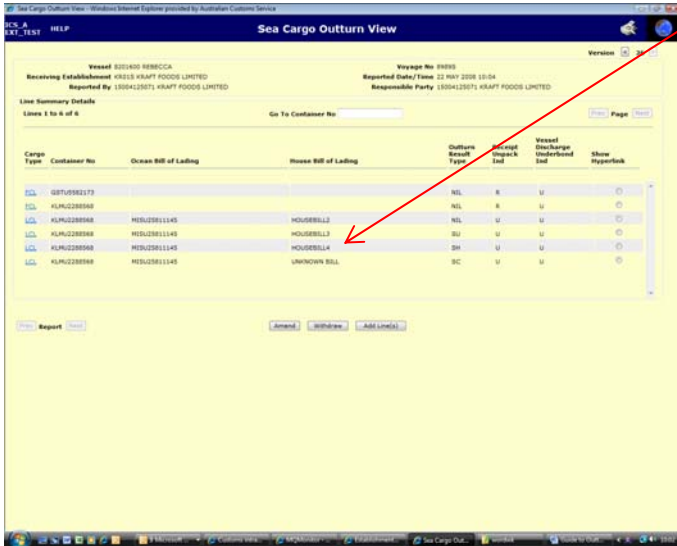
Fig 27 - Sea Cargo Outturn amend screen



- ☞ Sea Cargo Outturn amend screen appears
- ☞ Click on “Submit” Button

Guide to Lodging Sea Cargo Outturns via the ICS Diagnostic facility – A Quick Guide

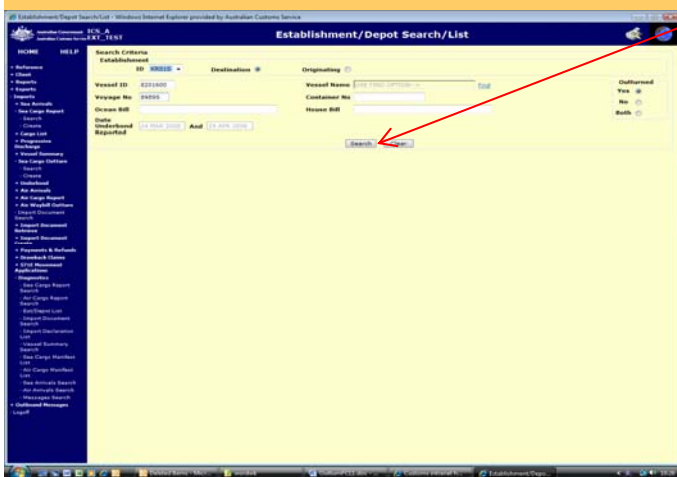
Fig 28 - Sea Cargo Outturn View screen



☞ Sea Cargo Outturn view screen displays short landed unpack for HouseBill4

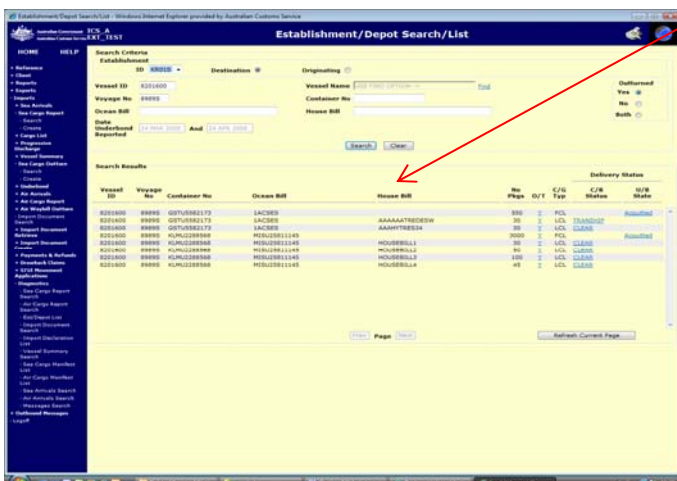
☞ Continue process until all House Bills have been outturned

Fig 29 - Filter Search by Outturn "Yes"



- ☞ Return to Establishment / Depot Search / List screen
- ☞ Filter search by identifying cargo that has been out turned ("Yes")
- ☞ Mandatory to search by Vessel and Voyage or container number
- ☞ Click on "Submit" Button

Fig 30 - Establishment/Depot Search/List



- ☞ Establishment / Depot Search / List displayed
- ☞ Outturned consignments displayed against search criteria